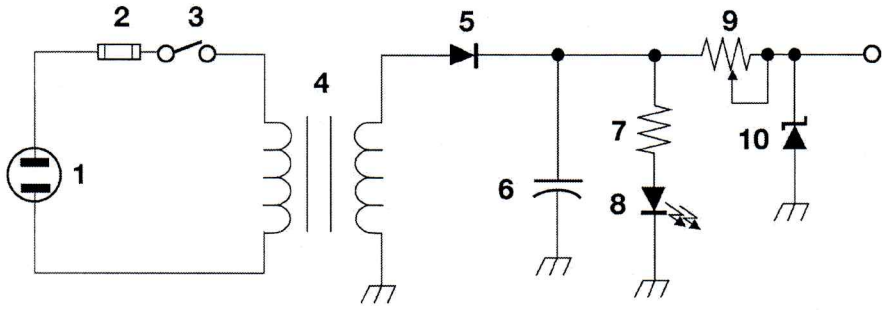


- 1 = Resistor
- 2 = Transistor
- 3 = Light or Indicator
- 4 = Battery



- 1 = Plug 2 = Fuse
- 3 = Switch (SPST) 4 = Transformer
- 5 = Diode 6 = Capacitor 7 = Resistor
- 8 = LED 9 = Variable Resistor
- 10 = Zener Diode

Figure T-2

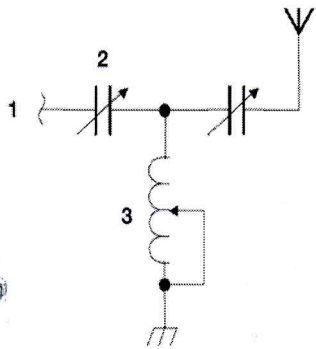
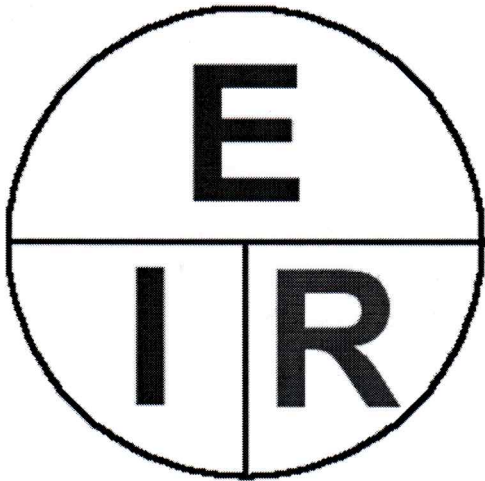


Figure T-3

- 1 = Different Diagram
- 2 = Variable Capacitor
- 3 = Variable Conductor



- E = Volts
- I = Amps
- R = Resistance